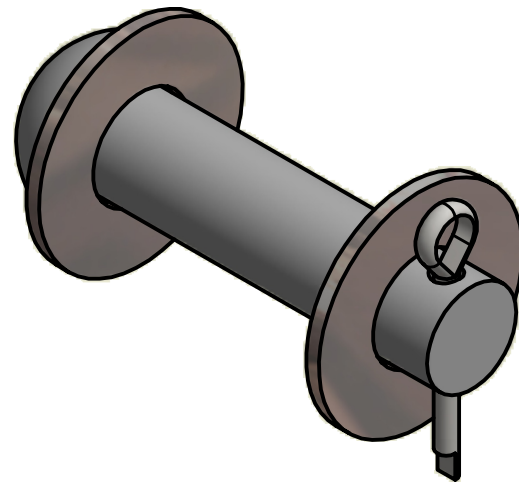
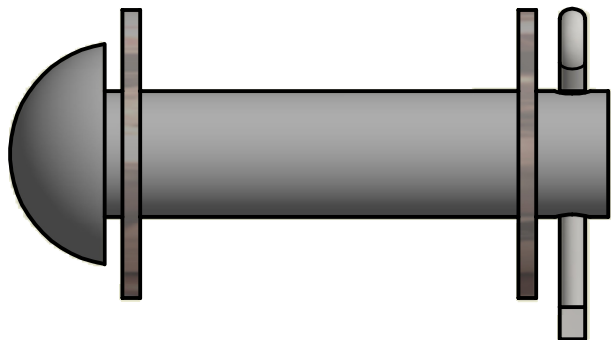


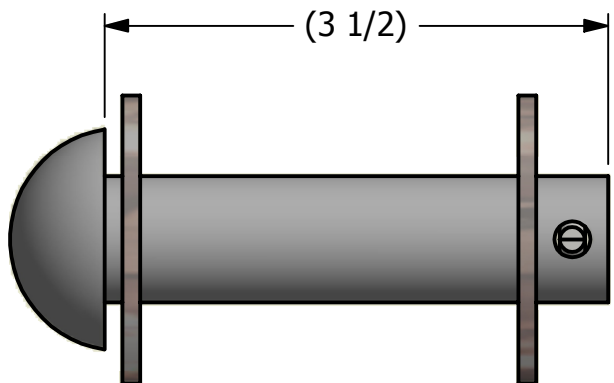
2



1



ISOMETRIC VIEW



3 1/2

SALES DRAWING

SALES DRAWING

REV	BY	DATE	DESCRIPTION
F	WEB	12-15-16	CHANGED DESCRIPTION FROM RIVET TO ROD UPDATED BOM & NOTE
E	JG	3-29-16	UPDATED TO CURRENT DRAFTING STANDARDS
D	PJG	10-11-00	REPLACED CP150 W/ CP31615C1
C	FOD	6-15-00	CHANGED NOTE; WASHER PART # WAS WASH78S4STD
B	FOD	4-5-00	ADDED NOTE
A	FOD	7-28-99	CHANGED PART NUMBER WAS BHR7835HA

UNLESS OTHERWISE SPECIFIED DIMENSIONAL TOLERANCES FRACTIONAL: ±1/16 X.XX: ±.03 X.XXX: ±.015 ANGULAR: ±1° DEBURR ALL SHARP EDGES. ALL MACHINED SURFACES TO HAVE A 125 RMS FINISH UNLESS NOTED OTHERWISE. THIRD ANGLE PROJECTION	DRAWN BY:	FOD
	CHECKED BY:	SAB
	PROTOTYPE BY:	FOD
	PROTOTYPE DATE:	7/19/1999
	APPROVED FOR PRODUCTION BY:	SAB
	PRODUCTION DATE:	7/18/1999

SALCO PRODUCTS, INC.		
PART NAME: BUTTON HEAD ROD ASSEMBLY 7/8"X3 1/2"		
MATERIAL: CARBON STEEL		
PROJECT #:	SHEET #: 1 OF 1	SCALE: 3:4
DRAWING #: A13622	PART #: BHR7835HC1A	

THIS PRINT, PROPERTY OF SALCO PRODUCTS INC, CONTAINS PROPRIETARY INFORMATION AND MUST NOT BE COPIED, REPRODUCED, OR USED DETRIMENTALLY TO OUR INTEREST.

2



1

B

B

A

A